



Farabi Corporation

Textile Testing Machineries, Consumables, Importer & Supplier

Registered Office:

Motaleb Mansion, 2.R K Mission Road, Motijheel, Dhaka-1203

Tel: +880-2-9512309, Phone: +8801778-822141

E-mail: razzak@fc2904.com, Web: fc2904.com

About Farabi Corporation

Farabi Corporation was established in 2012 with a goal to provide/supply quality Textile Testing products, calibration & support services for machines & Textile Testing Labs (both local & international) in Bangladesh.

All our products are imported from reputed manufacturers of UK,USA, Germany, Japan, Sweden, Singapore, Korea, and China which are well known in the market.

Our machineries, equipments, consumables & calibration services meet international standards & our staffs are so committed that within a short period of time it became one of the leading supplier & importer of textile testing products in Bangladesh.

We are trying to reach our clients with our sincerity, integrity prompt response. We have been reviewing our activities regularly to ensure the quality of our total support, to ensure it we are expanding our scopes to supply required items for our clients.

We are working hard to provide international standard quality products with reasonable & competitive price to satisfy our clients who can produce quality samples for the production with reasonable cost.

Our clients are valuable & respectable. We are working for them & contribute in the development.

Application

Textile Tensile Testing Machine, available with single and dual column frame with capacities of 250kgf, 500kgf, 1000kgf, 3000kg (500lbf, 1000lbf, 2000lbf, 6,000lbf) and include two model types, the M series and the P series. These machines are designed to test a wide range of yarn, fabric, rubber, paper, and other materials in tension, compression, flexure, shear and peel.

P Series

PC-controlled with Panasonic AC servo motor and two quality ball-screws for ideal and smooth control.

Building on the quality and technology that is built into the M series, TESTEX offers the P series of machines to complement the popular and successful M series. The P series models have similar specifications to the M series, but they talk directly with a standard PC running a data analysis software package in English or Chinese, via a high speed RS232 in both ASCII and super high speed binary modes.

The M and P series use quality load-cells with an accuracy of 0.5% of the applied load value, from 2% to 100% of the load-cell capacity. The M and P series have a huge assortment of specimen grips and fixtures available, allowing the selection of an ideal grip for your application.

Standard

ISO 13934.1/2 1504606 ISO 9073.3/4 ASTM D76 ASTM D5034 / 5035 ASTM D2261 / D434 / D4964 / 5587 / D3936 GB/T 3923.1/2 GB/T 13772.1/2/3 GB8687 FZ/T 2001 9 / 70006 / 70007/ 01085 / 01030 JIS L1093 BS, DIN



Textile Tensile Testing Machine



Martindale Abrasion & Pilling tester



Computerized Elmendorf tear Tester



Fabric Pneumatic Bursting Tester



ICI Pilling Tester



Electronic Crockmeter



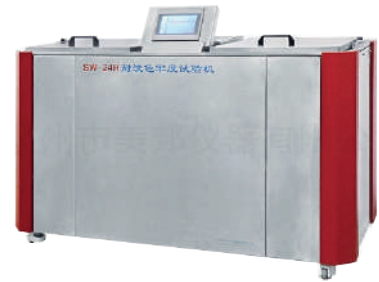
Manual Crock Meter



Fabric Ball-Bursting Strength Tester



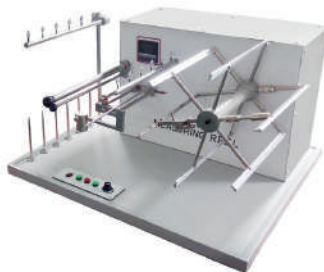
Garment & Printed Fabric Durability Tester



Washing Fastness Tester



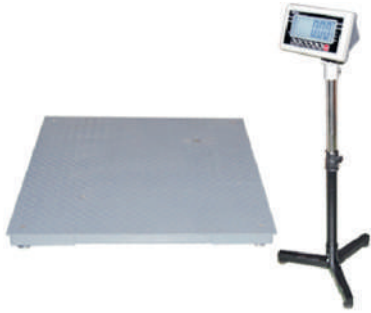
Yarn Board (Board Winder)



Wrap Reel



Lab Mini Dryer



Digital Floor Scale



Digital Platform Scale



Precision Balance



GSM Balance



Yarn Count Balance



Precision Balance



GSM Balance



Hydraulic GSM Cutter



Hydraulic Cutter



Electric Circular Sample Cutter



Martor GSM Cutting Blade



GSM Circular Cutter



SafGuard Button Pull Tester



Textile Moisture Meter



Textile Moisture Meter (Digital)



SafQ Button Pull Tester



Tension Meter (Electronic)



Tension Meter (Mechanical)



pH Meter (Mettler)



pH Meter (Bench Top)



Electronic Pipettes E4 XLS



pH Meter Bench Top HI-2211



Dissolved Oxygen Meters



Electrode



Wascator FOM 71 CLS (Electrolux)



Tumble Dryer WH6-6 (Electrolux)



Washer - WH6-6 (Electrolux)



Labtex LBT-M6 AATCC Washer



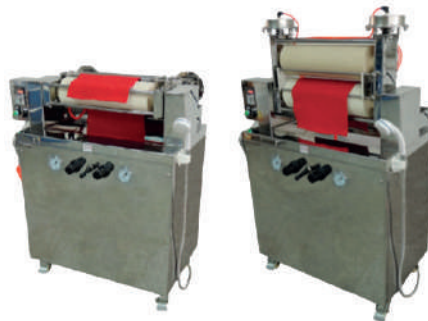
Labtex M6D AATCC Tumble Dryer



Washing Machine - Miele



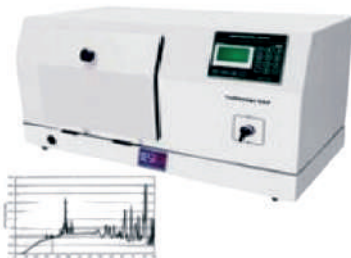
Tumble Dryer (Miele)



Lab Padder
(Vertical & Horizontal) TD120



Light & Weather Fastness Tester



Tabletop Light Fastness Tester



Twist Tester



Elmendorf Tear tester Digital



Coloro Lookbook



Coloro Codebook



Coloro Switch



Cotton Swatch Library (TCX) 100B



Cotton Chip Set FHIC400B



Coloro Toolbox



Pantone TCX Cotton Planner FHIC-300B



FHIP110A PANTONE TPG COLOR GUIDE



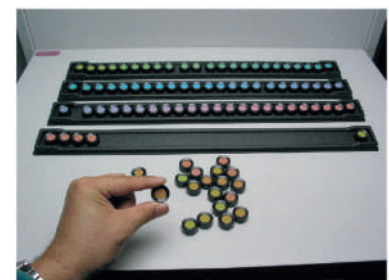
Pantone Coated & Uncoated GP1601B Formula Guide



Nylon Brights Set FFN100



FASHION, HOME + INTERIORS COTTON PASSPORT



Farnsworth Munsell 100 Hue Test



Colour fastness Cabinets (CF 60)



Verivide Colour Assessment Cabinet



Judge QC For Entry Level Visual Assessment



Tilo Color Assessment Cabinet



Accelerator Viewer (ACCEL)



Verivide all Lamp



M&S AATCC Viewing Board



Tilting Table (TT)



Paints for Verivide Light Box



Proof viewing cabinets (SBS)



Lux Meter



Pilling Assessment Viewer



Shakers 12/23 Posts (Dul-Action)



Shaking & Heating Water Baths



Incubator



Oven



Perspiration Tester Meter



Shrinkage Template



Yarn Speed and Length Meter (Techometer)



Hotplate & Stirrers



Hotplate & Stirrers



Magnetic Stirrers (Multi Position)



Capsure-RM-200



GSM Cutter



Multifibre DW



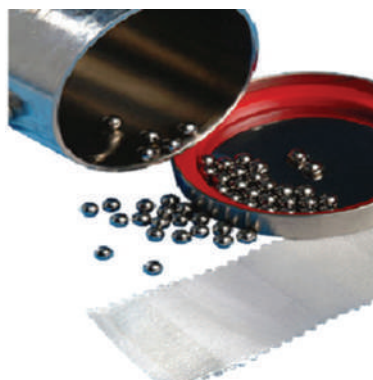
Crocking Cloth



Grey Scale



Blue Wools & Humidity Test Materials



Stainless Steel Balls



Phenolic Yellowing



SDC Woven/Non Woven Felt Pads



Washing Load Ballast, Makeweight



Verification-fabrics



Wool Abradent



Adjacent Fabrics (All Types)



Light Fastness Mounting Cards



ECE (B) Phosphate



ECE (A) Non Phosphate



IEC (B) Phosphate



IEC (A) Non Phosphate



Standard Soap



TAED Detergent



Sodium Perborate Tetrahydrate



Laboratory Chemicals



AATCC Detergent WOB & OB



Sewing Threads



Fluorescence Suppressor Glass



Fabric Conditioner



Tide Detergent Powder
7.2 Kg-Original



Tide Plus Bleach Detergent Powder,
4.10 KG P&G, USA



Tide Detergent 4.08Kg



Tide Liquid Detergent



Ariel Color Detergent
(Color & Style)



Ariel Original Detergent



Ariel Liquid



SKIP ACTIVE CLEAN DETERGENT



Persil Color Megaperls



Persil (Unilever)



Persil (Color)



Persil (UNIVERSAL MEGAPERLS)

PRODUCTS LIST

1. SDC Testing Consumable Item:

- a. Multifibre DW
- b. Crocking Cloth
- c. Grey Scale (Staining & Changing)
- d. Blue Wools & Humidity Test Materials (1-8)
- e. Stainless Steel Balls
- f. Woven / Non Woven Felt Pads (90mm & 140nm)
- g. Verification -fabrics
- h. Wool Abradent
- i. Fabric Conditioner
- j. Adjacent Fabrics(All Types)
- k. Phenolic Yellowing Impregnated & control fabric
- l. Light Fatness Fabrics
- m. Light fastness Mounting Cards
- n. ECE (A) Non- phosphate
- o. ECE (B) phosphate
- p. IEC (A) Non- phosphate
- q. IEC (B) phosphate
- r. Tetra acetyl ethylene diarnine - TAED
- s. Non- ionic- detergent
- t. Sodium Perborate Tetrahydrate
- u. Laboratory Chemicals
- v. AATCC Detergent WOB & OB (2Lb)
- w. AATCC Detergent WOB & OB (24 Lb)
- x. Persil Detergents
- y. Ariel & Tide Detergents
- z. Martindale Consumables
- aa. Assessment Aids
- bb. Washing Load Ballast, Makeweight

2. Pantone Book

- a. Cotton Swatch Library (TCX)
- b. Cotton Chip Set (TCX)
- c. Cotton Passport (TCX)
- d. Cotton Planer (TCX)
- e. Color Guide (TPG)
- f. Nylon Brights Set (TN)
- g. Pantone Matching System (PMS)Solid Coated & Uncoated
- h. Capsure - RM -200
- i. Barcode Scannar (Cipherlab)
- j. Fixed Angle Table (45 Degree)
- k. Farnsworth- Munsell 100 Hue Test (X-rite, USA)

3. Color Assessment Cabinet:

- a. Verivide Color Assessment Cabinet (UK)
Model:
CAC 60 (2 Feet four Light Options)
CAC 60-5 (2 Feet five Light Options)
CAC 120 (4 Feet four Light Options)
CAC 120-5 (2 Feet five Light Options)
CAC 150-5 (2 Feet five Light Options)
 - b. Tilo/Testex Color Assessment Cabinet
Model:
T- 60- 5 (2'five Light Options)
P-60-6 (2' six Light Options)
P-60+ update version(2' six Light Options)
P120 (4' six Light Options)
 - c. Lamp of Light Box (Verivide) For (CAC-60,120)
D65 Artificial Daylight 2/ 4 Feet
TL84- Point of Sale, 2/ 4 Feet
TL83 Warm White, 2/4 Feet
CWF-Cool White, 2/4 Feet
UV-Ultraviolet Black 2 Feet
Ultralume -30 2 Feet
Ultralume -3500k 2 Feet
D50 (18w)950 2 Feet
Filament (F) 40w
 - d. Lamp of Light Box For X-Rite SPL -III & QC
D65 750w, 120v (Quartz Lamp, Stage /Studio)
Cool White Lamp (30 w, F30 T8)
TL 84 36" Lamp (30w)
Horizon daylight @ 2300k Lamps (500w, 120v, 5000Q/MC EVR)
Ultra Violet 36" Lamp (30w, F30 T8)
Ultra Violet -9" Lamp (6w)
Illuminant "A "(Incandascnt)150WGNF 120v -Halogen Lamp
U30 Lamp (25 w Fo25/830/XP)
U35 Lamp (25w,T8)
 - e. Tilting Table (TT,UK)
 - f. Paints for Verivide Light Box (UK)
 - g. Accelerator Viewer (ACCEL)
 - h. Pilling Assessment Viewer
 - i. Lux Mete
- ## 4. Spare Parts for Light Box and Others:
- a. Front Switch Pannel (Key Pad) 4-Options
 - b. Front Switch Pannel (Key Pad) 5-Options
 - c. Pen Cartridge for Thermohygraph
 - d. ICI Pilling Tube
 - e. Electronic Ballast T8 218 & 236
 - f. Crock Meter Ring
 - g. Battery for Picoette

5. Digital Scale:

- a. Digital Truck Scale
- b. Digital Floor Scale
- c. Digital Platform Scale
- d. Precision Balance- IHB
- e. GSM Balance
- f. GSM Circular Cutter
- g. GSM Cutter
- h. QHB Series Scale
- i. Yarn Count Balance
- j. Yarn Count Tester
- k. IHB Precision Balance- PRW

6. Washer & Dryer Machine

- a. Electrolux Washer (W555H)
- b. Electrolux Tumble Dryer (T5130)
- c. Electrolux Wascator (FOM71 CLS)
- d. Miele Washer
- e. Miele Dryer
- f. AATCC Washer
- g. AATCC Dryer
- h. Siemens Washer
- i. Siemens Dryer

7. Electrolux Washer & Dryer Spare Parts:

- a. Load Cell Devise -For Electrolux Wascator FOM71 CLS
- b. Heating Element -For Electrolux Wascator FOM71 CLS
- c. Contact Bock -For Electrolux Wascator FOM71 CLS
- d. Display -For Electrolux Wascator FOM71 CLS
- e. Control Unit-For Electrolux Wascator FOM71 CLS
- f. Control panel -For Electrolux Wascator FOM71 CLS
- g. Motor Control -For Electrolux Wascator FOM71 CLS
- h. Magnatic Contactor -For Electrolux Wascator FOM71 CLS
- i. Key Pad- For Electrolux Wascator FOM71 CLS
- j. Control panel -For Electrolux Dryer T5130/T4130
- k. Programmer -For Electrolux Dryer T5130/T4130
- l. Power Supply-For Electrolux Dryer T5130/T4130
- m. Printed Circuit Board - For Electrolux Dryer T5130/4130

8. Yarn & Fabric Tasting Instruments

- a. Textile Tensile Testing Machine
- b. Button Pull Tester(SafGiard & SafQ)
- c. Textile Moisture Meter(Tem-1, Aqua-Boy)
- d. Textile Moisture Meter(Digital,DHT-1,SCHMIDT,Germany)
- e. Tension Meter(Mechanical & Electronical)
- f. pH Meter (Mettler, Bench Top , Hi - 2211)
- g. Electronic Pipettes E4 XLS
- h. Dissolved Oxygen Meters
- i. Electrode
- j. Computerized Elmendorf Tear Tester
- k. Fabric Ball- bursting Strength Tester
- l. Fabric Phenumatic Bursting Tester
- m. Garment & Printed Fabric Durability Tester
- n. High Temp Lab Dyeing Machine
- o. Lab Mini Dryer
- p. ICI Pilling Tester
- q. Washing Fastness Tester
- r. Sublimation Fastness Tester
- s. Yarn Board (Board Winder)
- t. Wrap Reel
- u. Spray Rating Tester
- v. Martindale Abrasion & Pilling Tester
- w. Infrared Lab Dyeing System
- x. Crock Meter Machine (Analogue & Digital)
- y. Dry Clening And Washing Cylinder
- z. Elmendorf Tear Tester Digital
- aa. Twist Tester
- bb. Light & Weather Fastness Tester
- cc. Vortex Mixers
- dd. Automatic Single Yarn Strength Tester
- ee. Tabletop Light Fastness Tester
- ff. Flammability Chamber (Vertical)
- gg. Lab Padder (Vertical & Horizontal) TD120
- hh. Fabric Density Glass
- ii. Yarn Speed and Length Meter (Techometer)
- jj. Temperature & Humidity Chambers

9. Others Lab Machineries:

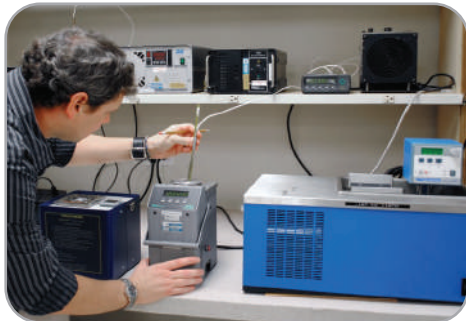
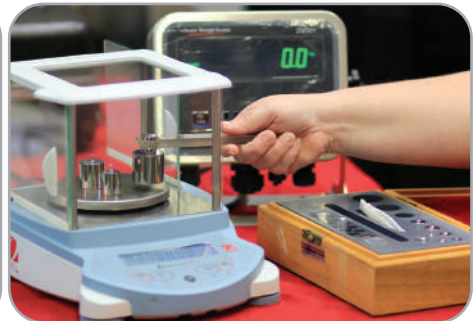
- a. Shakers 13/24 pots (Dual- action) Jeio Tech, Korea
- b. Shaking & Heating Baths
- c. Incubator
- d. Oven
- e. Perspirometer
- f. Shrinkage Template (TesTex)
- g. Shrinkage Template (SDL)
- h. Hotplate & Stirrers
- i. Magnetic Stirrers (Multi Position)
- j. Metal Hand Glove

10. Chemicals

- a) Sulphuric Acid (Crescent Chemicals Ltd, Bangladesh)
- b) Caustic Soda (Flack) ,Global Heavy Chemicals Ltd. Bangladesh



We Provide NABL Certified Calibration Service





Our Global Exporters



We Provide NABL Certified Calibration Service

Farabi Corporation

Textile Testing Machineries, Consumables, Importer & Supplier

Registered Office:

Motaleb Mansion, 2.R K Mission Road, Motijheel, Dhaka-1203

Tel: +880-2-9512309, Phone: +8801778-822141

E-mail: razzak@fc2904.com, Web: fc2904.com